

JUPITER NORTH

FOR
ANDCLIFFE DEVELOPMENT CO.

PLANT LIST:

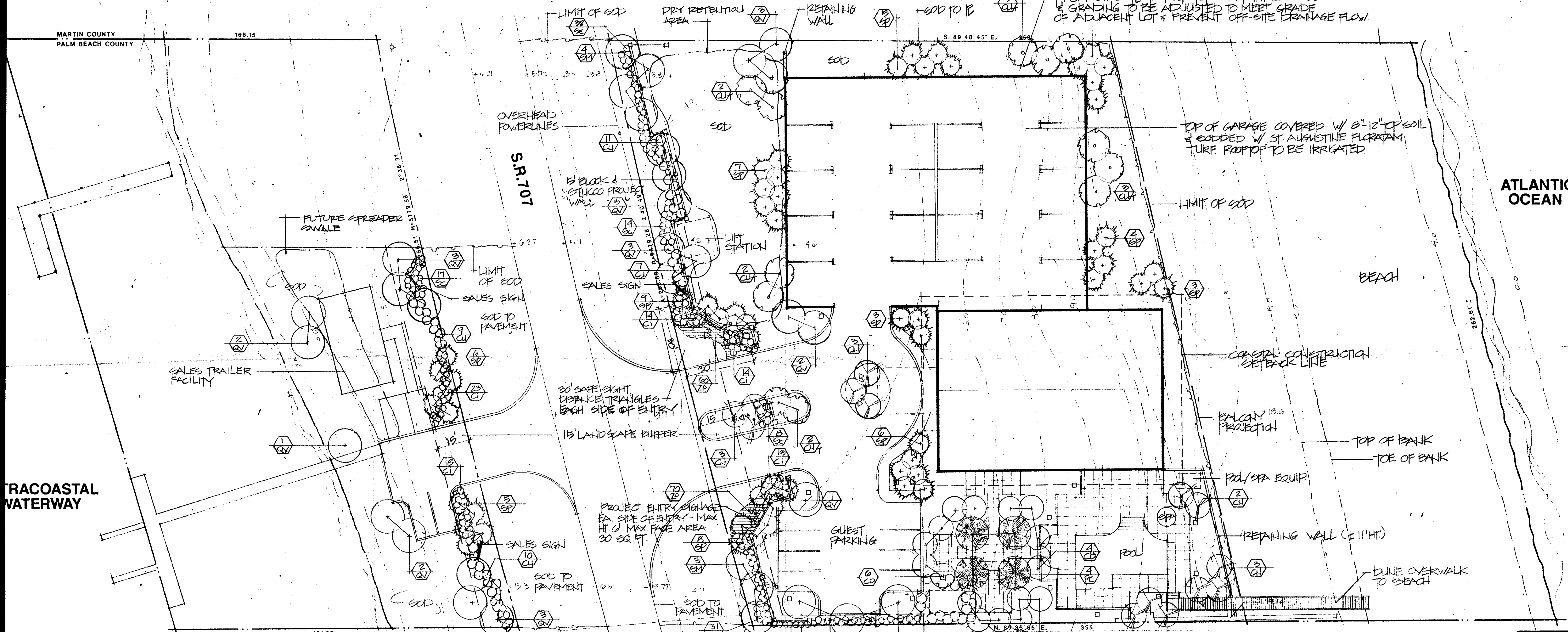
QUANTITY	SYMBOL	BOTANICAL NAME	COMMON NAME	SPECIFICATION
TREES				
16	CD	Coccoloba diversifolia	Pigeon Plum	10'-12' x 6'-8", 2-1/2"-3" Cal, Full specimen trees
12	CU	Coccoloba uvifera	Seagrape Tree	10'-12' x 8'-10", Full multi-trunk trees w/character
14	CN	Cocos nucifera	Coconut Palm-Green Malayan	12'-14' O.A., min. 4' gray wood
4	PC	Phoenix canariensis	Canary Island Date Palm	12'-14' clear trunk, matched specimens
26	QV	Quercus virginiana	Live Oak	12'-14' x 8'-10", 3" Caliper, Full
54	SP	Sabal palmetto	Cabbage Palm	10'-18' Clear trunk heights
7	SM	Swietenia mahagoni	Mahogany	12'-14' x 10'-12", 3" Caliper, Full
SHRUBS/GROUND COVERS				
113	CI	Chrysobalanus icaco	Cocoplum	3 Gal., 24"-30" x 24"-30", Full, 2' O.C.
37	Cu	Coccoloba uvifera	Seagrape	7 Gal., 4'-5' x 4'-5', Full, 4' O.C.
20	Mc	Myrica cerifera	Wax Myrtle	7 Gal., 4'-5' x 4'-5', Full, 4' O.C.
112	Sc	Scaevola plumieri	Inkberry	3 Gal., 24"-30" x 24"-30", 2' O.C.
130	ZF	Zamia floridana	Coontie	1 Gal., Full, 18" O.C.
SOD ALL SODDED AREAS OF THE SITE SHALL BE SODDED WITH ST. AUGUSTINE "FLORATAM" SOD (STENOPTERUM SECUNDATUM)				

OWNER:
OTTO B DIVOSTA AND BETTY J. DIVOSTA PARTNERSHIP
4500 P.G.A. BLVD., SUITE 400
PALM BEACH GARDENS, FLORIDA 33418
407-627-2112

DEVELOPER:
R. MASON SIMPSON
SANDCLIFFE DEVELOPMENT COMPANY
25 SADDLEBACK ROAD
TEQUESTA, FLORIDA 33469
407-744-2000

PLANNER/LANDSCAPE ARCHITECT:
JOHN R. AREND
THE EVANS GROUP
1030 NORTH ORANGE AVE., SUITE 200
ORLANDO, FLORIDA 32801
407-849-6310

ENGINEER:
MICHAEL B. SCHORAH P.E.
MICHAEL B. SCHORAH & ASSOCIATES, INC.
1850 FOREST HILL BLVD.
WEST PALM BEACH, FLORIDA 33406
407-968-0080



- NOTES:**
- PLANS WERE COMPLETED BY JOHN R. AREND FLORIDA REGISTERED LANDSCAPE ARCHITECT REGISTRATION NUMBER 4793
 - PLANTS SELECTED FOR THIS SITE ARE LARGELY NATIVE MATERIALS AND WILL SURVIVE IN THE SANDY, WELL DRAINED SOILS OF THE SITE. ALL MATERIALS WILL MEET THE REQUIREMENTS OF LANDSCAPE MATERIALS, EXCEPT THE ST. AUGUSTINE SOD PLANNED FOR THE SITE.
 - ALL LANDSCAPE PLANTING BED AREAS SHALL BE MULCHED WITH 3" OF PINE BARK OR CYPRESS MULCH.
 - ALL PLANT MATERIALS SHALL BE HEALTHY SPECIMENS AND MEET OR EXCEED THE STANDARDS OF FLORIDA NO. 1 MATERIALS AS PROVIDED FOR IN "GRADES AND STANDARDS FOR NURSERY PLANTS, PARTS I AND II," STATE OF FLORIDA DEPARTMENT OF AGRICULTURE AND CONSUMER SERVICES.
 - THE INVASIVE EXOTIC PLANTS ON THE SITE WHICH INCLUDE AUSTRALIAN PINE AND BRAZILIAN PEPPER SHALL BE REMOVED FROM THE SITE AS REQUIRED BY PALM BEACH COUNTY.
 - THE NATIVE VEGETATION INCLUDING SEAGRAPE AND NECKLACE POO PLANTS GROWING EAST OF THE COASTAL CONSTRUCTION SETBACK LINE SHALL BE PRESERVED. IRRIGATION WILL NOT SPRAY INTO THESE AREAS.
 - ALL OPEN PARKING ON THE SITE ARE CURBED AND WILL NOT HAVE WHEEL STOPS.
 - COMPATIBILITY LANDSCAPE BUFFER STRIPS ARE NOT REQUIRED FOR THIS DEVELOPMENT SINCE THE SITE IS ZONED RESIDENTIAL AND ALL ADJUTING PROPERTIES ARE ZONED RESIDENTIAL. THE BUFFERS REQUIRED FOR THIS PLAN INCLUDE 15' BUFFERS ON EACH SIDE OF SR 707 AND THE INTERIOR 5' BUFFER REQUIRED ALONG THE GUEST PARKING AREA.
 - TREE PRESERVATION CREDIT IS NOT BEING SOUGHT FOR THIS DEVELOPMENT SINCE ONLY TWO EXISTING CABBAGE PALMS ON THE SITE ARE BEING SALVAGED AND USED IN THE LANDSCAPE PLAN.

CATEGORY	ULDC CODE REQUIREMENTS	PLAN PROVIDED
Tree Total	1 tree/1500sf lot area or 1 tree/2500sf lot area See Sec. 7.3.3.1	Req. 83 Trees Proposed 133 Trees
Native Tree Total	Minimum 50% See Sec. 7.3.3.8	86%
Very Drought Tolerant	Score 30 Points See Table 7.3.3.6 Water Conservation Point Scale (Water Conservation Point Scale chart, see attached, shall be completed and attached to all landscape plans)	100%
Shrub Total (Interior)	3 shrubs/2500sf lot area See Sec. 7.3.3.11	NA
Shrub (Native)	Minimum 50% See Sec. 7.3.3.11	100%
Tree Species Mix	See Table 7.3.3.5 Tree Species Mix	6 Species
Vehicular Use Area (Interior trees)	See Sec. 7.3.3.2	2 Trees Req.
Vehicular Use Area (Shade Trees)	Minimum 75% See Sec. 7.3.3.8	4 Trees
Interior Vehicular Use Area (Landscaping)	40sf or 50sf/parking space See Sec. 7.3.3.2.A	NA
Other Vehicular Use Area	Minimum 15% Interior green area See Sec. 7.1.5.2.D	Req. Area 681 SF Actual Area 964 SF
Tree Sites @ planting (Perimeter)	Min. 12' Ht. and Min. 2.5" DBH See Sec. 7.3.3.6	All Buffer Trees Meet This Requirement
Tree Sites @ planting (Interior)	Min. 10' Ht. and Min. 2" DBH See Sec. 7.3.3.6	All Trees Meet This Requirement

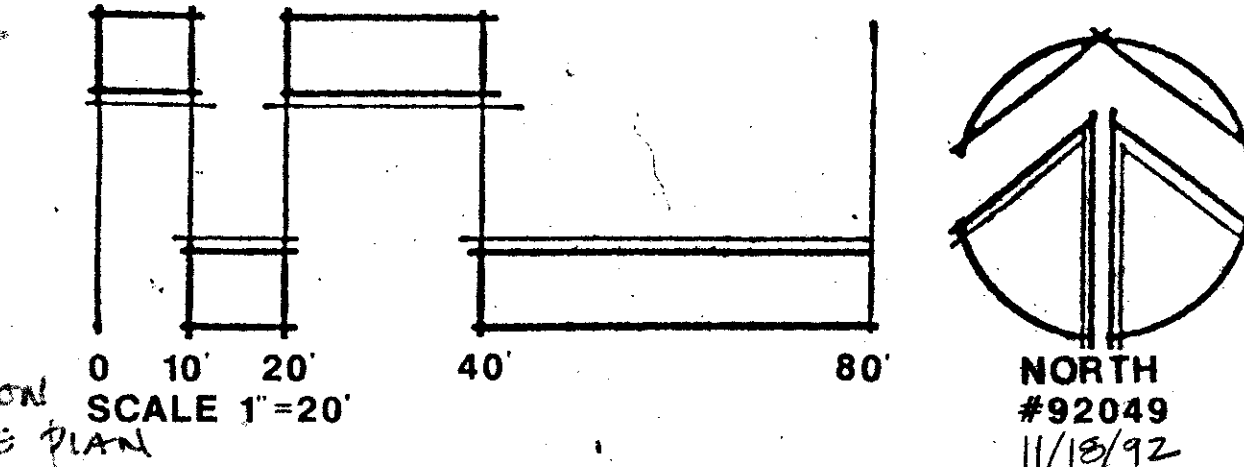
TECHNICAL/DESIGN/STANDARD	POINTS	PLAN PROVIDED
Melioration-Soil Controller (Other than geotextile)	5	0
Drip/Trickle/Micro Irrigation System	5	0
-25 - 50% of system	7	0
-75 - 100% of system	10	0
Irrigation Quality Effluent	10	0
-25 - 50% of site	20	0
-50 - 75% of site	20	0
-75 - 100% of site	30	0
Florida Native Landscape	10	30
-25 - 50% plant materials	20	30
-51 - 75% plant materials	20	30
-76 - 100% plant materials	30	30
Required Trees, Very Drought Tolerant	5	10
* -11' - 10' Ht.	5	10
Extra Shade Trees, Very Drought Tolerant	10	NA
-20 - 50% (more shade trees than required by ULDC)	10	NA
-51 - 100% (more shade trees than required by ULDC)	10	NA
Sod/Turf Area Alternative	5	0
-25 - 50% of sod/turf area	10	0
-51 - 100% of sod/turf area	10	0
Required Shrubs, Very Drought Tolerant	5	10
-25 - 50%	5	10
-51 - 100%	10	10
TOTAL POINTS FOR WATER CONSERVATION	50	50

SITELIGHTING
 POST LAMP OR BOLLARD FIXTURE
 UPLIGHT FIXTURE
 SITE LIGHTING SHALL BE DIRECTED AWAY FROM ALL BEACH AREAS
 DRL

LANDSCAPE PLAN

ENVIROSCAPE
 LAND PLANNING & LANDSCAPE ARCHITECTURE
 A DIVISION OF THE EVANS GROUP

1301 N. ORANGE AVE., SUITE 200
 ORLANDO, FLORIDA 32801
 407-849-6310
 FAX 407-849-6309



SHEET
3
 OF 6

ur0333.igr
 JUPITER NORTH 10/40/43 PG3

2.23.92

NORTH
 #92049
 11/18/92